



CHAKRA FLEXIBLE DRIVE COUPLINGS

CHAKRA flexible drive couplings are used for positive transmission of power from one shaft to another. Chakra Couplings consist of two steel gear hubs engaged in a sleeve of high grade plastic material. This material has superior strength and wide operating temperature range. The gears have crowned tooth form which permits axial and angular misalignment. The couplings are easy to assemble, require no maintenance or lubrication and generate no transmission noise.

ASSEMBLY PROCEDURE

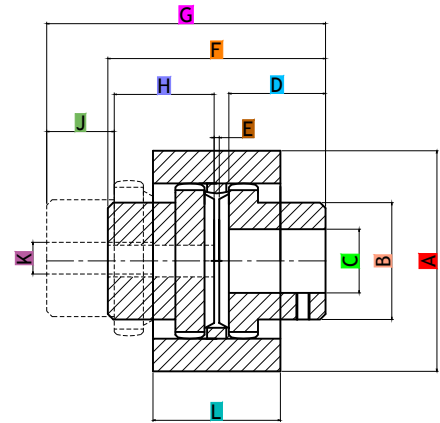
- Maximum permissible misalignment 1.5 Degrees.
- Ensure Coupling Hubs easily fit on shaft.
- Do not use undue force.
- Maintain gap between hubs as shown in sketch.
- Use grubs screws to locate gear hubs in their respective shafts.
- For shock load application use the following formula.

$$\text{Rating/100 RPM Coupling} = \frac{\text{HP of Application} \times 100 \times F}{\text{Rpm of Application}}$$

LOAD FACTOR (F):

Application	El.Motor	IC Engines
Uniform Load	1.00	1.2
Medium Shock	1.25	1.5
Heavy Shock	1.75	2.0

Hub Withdrawl Clearance J



SAILENT FEATURES

- Finds application in all ranges of hydraulic equipment and in the transmission market.
- Maintenance free; No Lubrication.
- Crowned teeth form gears permitting axial and angular misalignment.
- Cost effective and easy to Assemble.
- Compact and streamlined.